



FURNITURE



CONTAINERS



FOUNTAINS



LIGHTING AND DECOR

It's HARD TO explain why we love old things. But we do. The richness and presence of something un-earthed and uncommon simply captures our imaginations, connecting us somehow to places and events before our own times. Too, there is a certain wisdom and grace inherent in antiquities that makes us feel rooted and permanent in a way almost nothing else can. This is especially true of things in the garden that have a heft and a feel as solid as the earth that holds them. Though antique objects are increasingly rare, recreating the feel and sophistication of those treasures can produce wonderful results, and it's why Elegant Earth exists today.

While we have evolved past strictly doing historically inspired reproductions, we have taken the lessons learned along the way and apply them to all of our new creations. It is our sincere hope that our products bear witness to what we have discovered on this journey: the principals of good design, what materials and styles endure, what fabrication techniques work, and the charm and honesty of real patina.

www.elegantearth.com

1700 Vanderbilt Road | Birmingham, AL 35234

phone: 205.324.6464 | toll free: 800.242.7758 | facsimile: 205.324.7555

showroom: Atlanta — AmericasMart | manufactory: Birmingham | showroom: High Point—North Elm District

ELEGANT EARTH

2017 CATALOG



ELEGANT EARTH

ESTABLISHED 1988

CAT # 00012

WELCOME TO ELEGANT EARTH

🌿 ELEGANT EARTH PRODUCTS. *Made green. Made in America.* Elegant Earth’s extensive US-based manufacturing facilities produce a diverse and continually expanding line of earth-friendly products. Selling only to the trade, we desire to inspire those with an eye for function and beauty. Our products are proudly made in our “recycled” historical factory in Birmingham, Alabama. Adhering to strict environmental standards and utilizing water-based finishes for our concrete pieces, the natural colors found in Elegant Earth products are made with organic

pigments. Over 90% of our packing materials are recyclable and/or biodegradable. Products are shipped in recycled boxes and packed with biodegradable excelsior.

🌿 *Elegant Earth and the Acanthus.* We’ve carefully and thoughtfully designed this stylized Acanthus leaf logo to represent our company. The leaf’s origin as a Greek symbol of quality, longevity, and creativity is a fitting emblem for our work. These are traits we very much value, and qualities we build into every product we produce.

OUR FACILITY

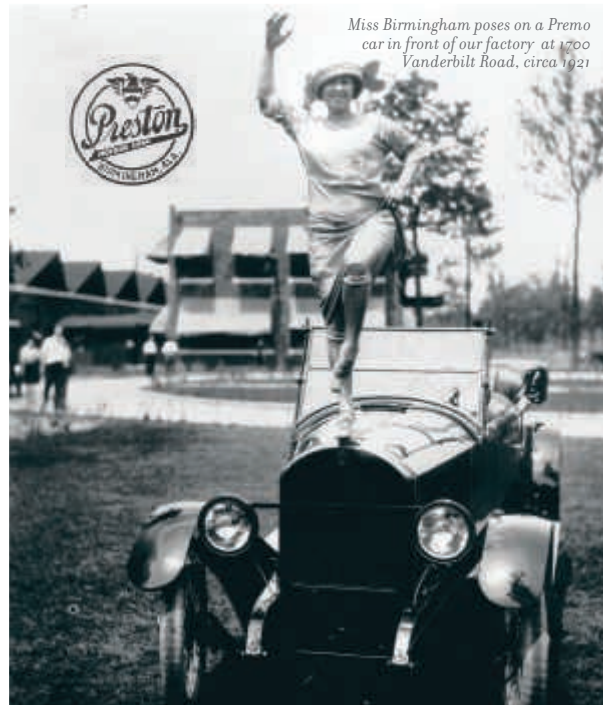


Photo courtesy of Birmingham, AL Public Library Archives

🌿 WE BEGAN OUR 25th year relocating the operation to an historic 185,000 sq. ft. factory on 8.5 acres near the heart of Birmingham. This facility is roughly 6 times the size of our former space, allowing us to increase our efficiency and capacity as we continue to grow.

Higher capacity and efficiency are great, but they can sometimes have a negative effect on creativity and the design process. We were especially excited about this move because the architecture and history of the space are in harmony with our core beliefs and everything that is good about our line.

Built in 1920 to house the automaker Preston Motors Company, 1700 Vanderbilt Rd. was slated for demolition. In this property we saw a perfect match for our creative operation and we spared this unique structure from the wrecking ball.

It’s “sawtooth” roof design is an iconic symbol of American manufacturing at its zenith. We hope to honor the legacy of quality and craftsmanship defined by that era as we make our products within its light-filled walls.

ALL CONTENT COPYRIGHT 2017 ELEGANT EARTH, INC.

The majority of the photography in this book is by the talented photographer Sylvia Martin

NOTES

OUR HISTORY



🌿 OVER A QUARTER CENTURY AGO ELEGANT EARTH BEGAN as a retail boutique in a charming turreted storefront in English Village near Birmingham. Featuring a wonderful mix of antique and new garden ornament curated by founder Jane Comer, the store drew national attention and amassed a following of designers and home owners alike.

Following the historical reproduction techniques Chadwick Stogner was employing to create garden

ornament, the business evolved into a manufacturing operation that reflected the store's look and sensibilities by creating pieces that make design statements, solve design problems, and just feel right. We share our love of the past and the thrill of discovery with our customers, and strive to deliver the combination of good design and quality that will stand the test of time.



OUR VISION FOR THE FUTURE

🌿 AS WE BEGIN 2017, we are excited about the body of work we have put together in this catalog and thankful for all of the relationships that have brought us to this point. It's been a long road, but in a way we feel like we are just getting started.

We are truly living in a great time in the decorative arts! The desire for good design and craftsmanship has propelled the industry forward. Discovering, rediscovering, improving, trying new techniques and materials - all these things become manifest in a healthy and collaborative environment. We all benefit by being in the mix and we are all called forward.

So that's our vision: *We move forward!*

We move forward recommitted to our principals. We move forward confident in our craftsmanship. We move forward desiring to make Elegant Earth a legendary brand. We move forward by being open to new techniques and materials. But the most important way we move forward is in collaboration with you. Because our vision is really about inspiring your vision, because in turn, your vision will always inspire us.

Chadwick Jon Stogner,
President

TABLE OF CONTENTS

Finishes.....	4	Birmingham Collection Containers	66	Birdbaths	114
Perfect Dining Tables.....	6	Bowls	72	Statuary	116
Old English Dining Tables	14	Historical Urns and Pots.....	76	Wall Decor	122
Edgewood Dining Tables	22	Landscape Classic Containers.....	80	Accessories.....	123
Benches and Seating.....	24	Metal Containers	90	Finials and Orbs	124
Console Tables	30	Designer and Small Containers	92	Faux Bois.....	126
Occasional and Coffee Tables.....	40	Troughs.....	96	Lamps and Lighting.....	128
Special Furniture Collections.....	50	Pedestals and Plinths.....	100	Fire.....	137
Provence Containers.....	58	Fountains.....	104	Studio.....	138

STANDARD CONCRETE FINISHES

All of our concrete products are available in any of the finishes shown below unless otherwise noted. Please be aware that all pieces are hand-finished in small batches, and that variation in color should be expected. Furthermore all photography is representational due to setting, lighting and printing variations.

RUSTIC FINISHES



Moss

Peat moss thickens this stain making it great for rough and heavily textured pieces. The light-brown tones display a patina that ages beautifully. Works well with brick and field-stone colors.



Rottenstone

Slate-colored stain over white concrete yields a light gray limestone patina. Perfect for bluestone and slate patios.



French Wax

This sandstone-colored stain is applied over white concrete, achieving the warm patina of the stone of Provence.



Lichen

A flat black wash is applied over our moss finish, creating a warm, dark hue.



Plaster White

White wash hand-rubbed over gray concrete showcases relief on smoother pieces.



French Grey

Our French wax stain over grey concrete gives a warm taupe hue.

MODERN FINISHES



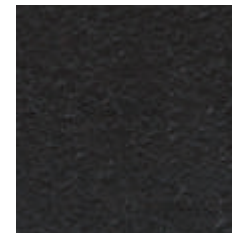
Blanc

Our signature white portland concrete with a water based sealer on the surface



Gris

Grey portland concrete with a water based sealer on the surface



Noir

Grey portland stained flat black

METAL FINISHES

All of our Iron (except for chairs on pp 28 & 29) is made and finished in the U.S.A. using the highest quality materials and techniques. Our weathered zinc is done via the "hot dip" method, and all of our painted finishes are automotive grade powder coating.



Weathered Zinc
(Galvanized)



Gun Metal
(Clear Coated Black Iron)



Taupe
(Powder Coated)



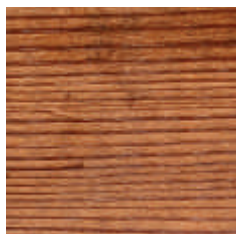
Flat Black
(Powder Coated)



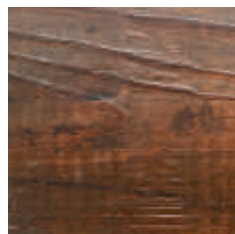
Flat White
(Powder Coated)

WOOD FINISHES

We love mixing materials! The versatility and beauty of wood is a perfect fit for our line. Wood is a natural product, so variation in surface and color should be expected - including checks and knots. We like to use extra thick pieces to allow for years of use with routine maintenance. Please inquire for more specific information and care instructions.



Sealed Antique Pine
Reclaimed antique Heart Pine sealed with a water-based sealer.
Covered and Indoor Use Only



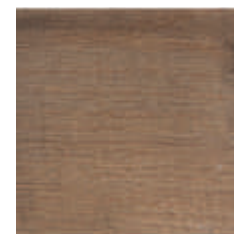
Stained Antique Pine
Reclaimed antique Heart Pine stained to bring out the character, and sealed with a water-based sealer. Covered and Indoor use only



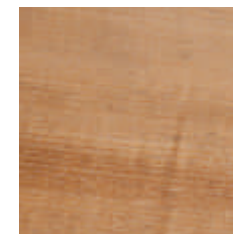
Sealed Cedar
Cut extra thick to allow for years of use and maintenance.
Sealed with a water-based sealer. Suitable for year-round outdoor use.



Stained Cedar
A dark walnut stain is applied to thick slabs of cedar before it is sealed with a water-based sealer.
Suitable for year-round outdoor use.



Oak
We use both kiln dried oak in our furniture (see page 51) and weathered antique oak in our lighting (see page 136).



Teak
We use sustainably harvested teak in our chairs and benches on page 28



Shown: 48" Perfect Round Dining Table (FN348) with Medium McAlpine Trefoil Planter (MH 911), Shutze Lemon Tree Pot (PL 246), and custom iron and concrete coffee table - all in blanc.

THE NAME SAYS IT ALL

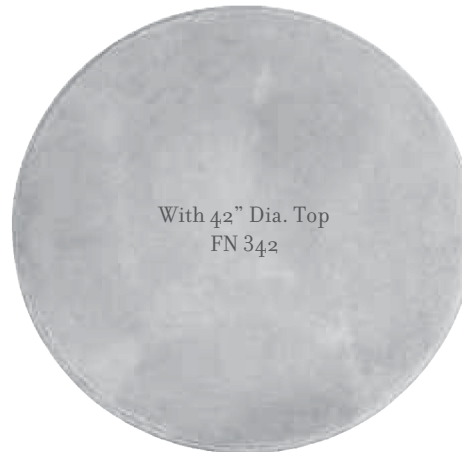
THE TIMELESS SHAPE OF A PROVENÇE ANTIQUE were the inspiration for this stunning line of dining tables. The look and feel of solid sculpted limestone adds presence and sophistication to any alfresco setting. Just imagine what one of these beauties could do to an interior space!



PERFECT SQUARE DINING TABLE
42" L x 42" W x 30" H
42" Version Shown in French Wax



PERFECT ROUND DINING TABLE
Both Versions 30" H
48" Version Shown in French Wax



Shown: 60" Perfect Round Dining Table (FN360) in French Wax with Woodlawn Bowl (PL297). Can accommodate up to six French Teak Side Chairs (FN100)

LARGE FORMAT

✿ GATHER FAMILY AND FRIENDS in style with our largest sized "Perfect" tables. Our freeze proof concrete tables never have to be moved out of the elements and will be cherished for years to come.



60" PERFECT ROUND DINING TABLE
FN360
60" Dia x 30"H
Shown in French Wax



82" PERFECT BANQUET TABLE
FN382
82"L x 42"W x 30"H
Shown in French Wax



122" PERFECT BANQUET TABLE
FN390
122"L x 42"W x 30"H
Shown in French Wax



Shown: Perfect Oval Café Table (FN800) in French Wax with two Belgian Bistro Chairs (FN170) and a Hampton Urn (PL177) in Ash

SVELTER LINES

✿ OUR PERFECT CAFÉ pedestal offers more leg room without sacrificing stability. Because it can pair with a wide range of tops, it's easy to create an intimate and comfortable respite with just the right amount of refinement.



WITH 48" x 32" TOP
FN 800



PERFECT OVAL CAFÉ TABLE
FN800
48" L x 32" W x 30" H
Shown in French Wax



With 36" x 36" Top
FN 799



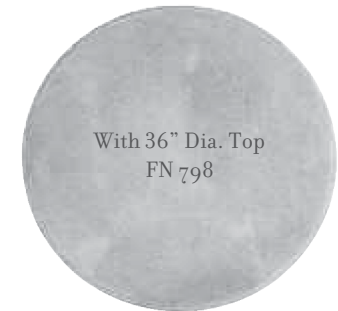
With 42" x 42" Top
FN 802



With 48" Dia. Top
FN 803



With 42" Dia. Top
FN 801



With 36" Dia. Top
FN 798



PERFECT SQUARE CAFÉ TABLE
All Versions 30"H
42" Version shown in French Wax



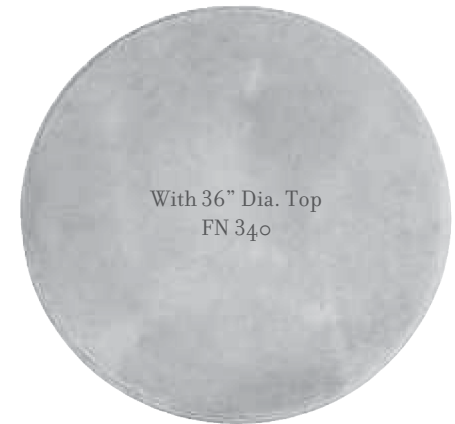
PERFECT ROUND CAFÉ TABLE
All Versions 30"H
42" Version shown in French Wax



*Shown: 36" Perfect Round Bistro (FN340) in French Wax
with 2 French Teak Bistro Chairs (FN112)
and a Cute Craftsman Bowl (PL152) in French Grey*



With 32" Dia. Top
FN 332



With 36" Dia. Top
FN 340



PERFECT ROUND BISTRO
FN332
All Versions 28"H
Shown in French Wax

A PERFECT CONVERSATION

✿ CREATE AN INVITING atmosphere for sharing moments and hospitality with our Perfect Bistro tables. With smaller bases that sit a couple of inches lower than standard dining height, these tables allow the conversation to flow. The range of tops will also allow you to find the perfect fit for even the most intimate of spaces.



With 31" x 23" Top
FN 500



With 36" x 36" Top
FN 341



With 36" x 24" Top
FN 501



PERFECT OVAL BISTRO
FN500
31" x 23" Oval x 28"H
Shown in French Wax



PERFECT SQUARE BISTRO
FN341
36"L x 36"W x 28"H
Shown in French Wax



PERFECT RECTANGLE BISTRO
FN501
36"L x 21"W x 28"H
Shown in French Wax

Shown below: 48" Old English Round Table (FN748) topped with three candlesticks in Gold (from L to R): 22" Cathedral Candlestick (LT222), 28" Cathedral Candlestick (LT228), and 15" Cathedral Candlestick (LT215). See page 133 for all three.

©2002 Southern Living. Reprinted with permission.



CASUAL ELEGANCE

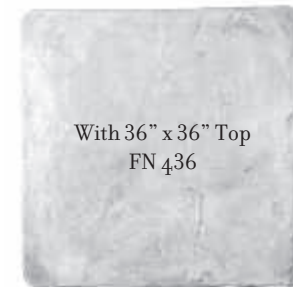
AS OUTDOOR LIVING continues to evolve, so does the furniture that accompanies it. Our unique concrete dining tables offer a wonderful sense of permanence as well as extreme stability against high winds and the elements. These designs enhance both the indoor and outdoor experience with a combination of function, durability and beauty. Offering tables with single or multiple pedestals, several options are available to fit a variety of spaces. Our signature Old English Collection has classical lines tempered by chiseled edges yielding an elegant and rustic look that's at home in almost any setting.



OLD ENGLISH SQUARE TABLE
All Versions 30"H
42" Version shown in French Wax



With 42" x 42" Top
FN 442



With 36" x 36" Top
FN 436



OLD ENGLISH ROUND TABLE
All Versions 30"H
48" Version shown in Rottenstone



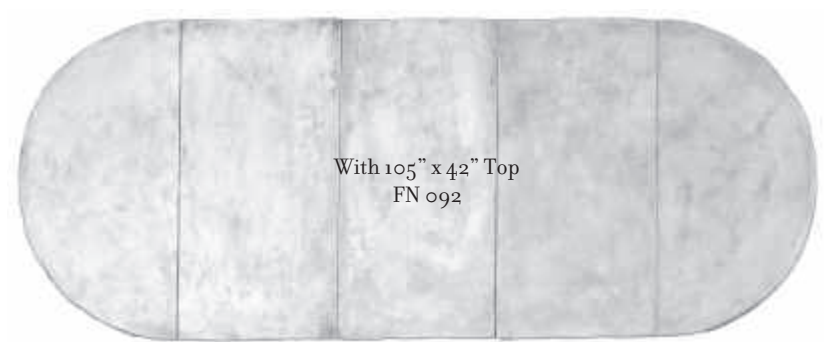
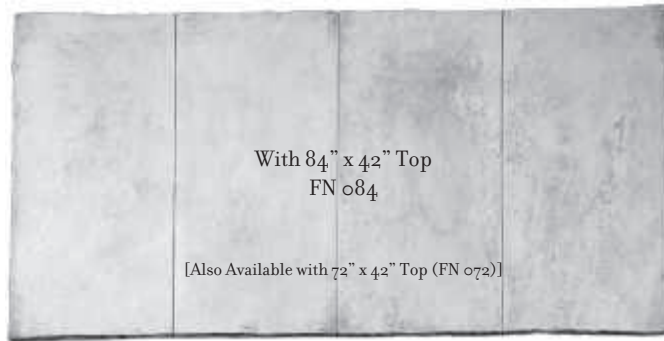
With 42" Dia. Top
FN 742



With 48" Dia. Top
FN 748

Shown below: 84" Old English Dining Table (FNo84) accented by two French Teak Love Seats (FN115), and two French Teak Side Chairs (FN100). Dining table is topped with two Medium French Baluster Candlesticks (LT265; See page 135) in French Wax





OLD ENGLISH DINING TABLE
All Versions 30"H
 84" Version shown in French Wax

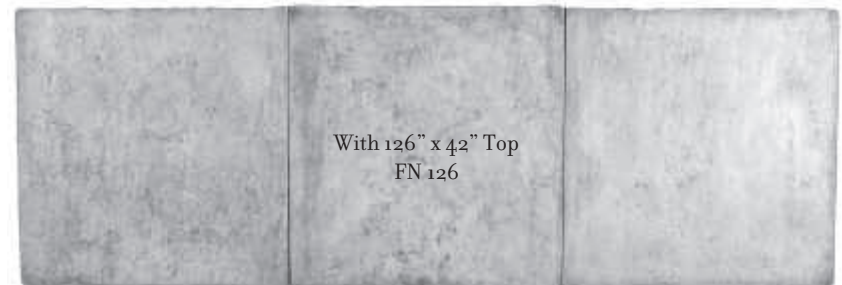
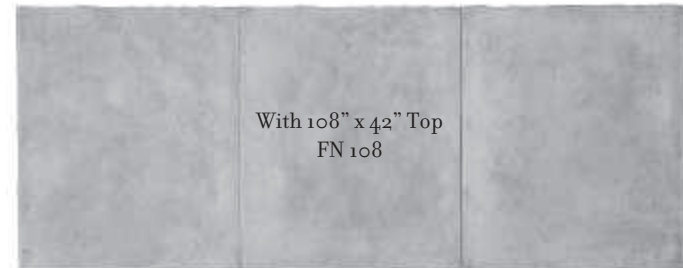
OLD ENGLISH OVAL DINING TABLE
All Versions 30"H
 84" Version shown in French Wax



*Shown below: 126" Old English Banquet Table
(FN126) in French Wax with a pair of Old English
Benches with cedar tops (WF305) See page 27.*

THREE'S A PARTY

✿ COMBINE THREE or more of our pedestals and tops together and you will set the stage for many feasts to come. Our engineered modular design allows for ease of set-up and a long lifetime of enjoyment. Pair with our cedar topped benches for a truly remarkable ensemble.



126" OLD ENGLISH OVAL BANQUET TABLE
FN095
126" L x 42" W x 30" H
Shown in Moss



OLD ENGLISH BANQUET TABLE
Both Versions 30" H
126" Version shown in French Wax

*Shown: 70" Old English Picnic Table (FN016)
with Finial Base Bench (FN024) both in French Wax.*



With 36" Dia. Top
FN 018



With 42" Dia. Top
FN 019



OLD ENGLISH ROUND CAFÉ TABLE
Both Versions 30"H
36" Version shown in French Wax

TRIMMED DOWN

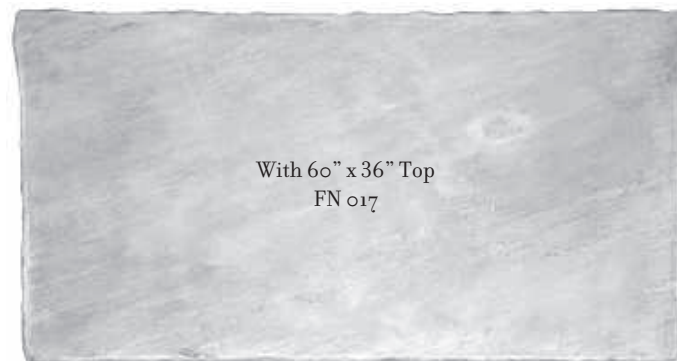
✿ OUR OLD ENGLISH Café Pedestal is a leaner version of our most popular Old English Dining Pedestal. A perfect match with our smaller dining tops.



With 36" x 36" Top
FN 021



OLD ENGLISH SQUARE CAFÉ TABLE
FN021
36" L x 36" W x 30" H
Shown in French Wax



With 60" x 36" Top
FN 017



With 70" x 36" Top
FN 016



OLD ENGLISH PICNIC TABLE
Both Versions 30" H
70" Version shown in French Grey



Shown: 144" Edgewood Banquet Table (FN603) in Blanc and a pair of Edgewood benches with square edge sealed cedar tops (WF655)

NEW AGAIN

✿ THE STUNNINGLY MODERN look of our Edgewood Collection was actually inspired by an old Craftsman Era stone bench from the 1920's — proving once again that good design and quality workmanship never go out of style. The modular 48" sections allow you to fit any space, and our ping pong size top allows you to serve your opponent when you're not serving guests. Love, love!



EDGEWOOD PING PONG TABLE
FN600
108" L x 60" W x 30.5" H
Shown in Blanc
Also available in 96" L x 48" W Version (FN602)



EDGEWOOD 144" BANQUET TABLE
FN603
144" L x 48" W x 30.5" H
Shown in French Grey
Larger and custom sizes available



EDGEWOOD 48" SQUARE TABLE
FN601
48" L x 48" W x 30.5" H
Shown in Blanc

48" STONE BENCH
FN848
48"L x 16"W x 18"H
Shown in Rottenstone



PEACEFUL CONTEMPLATION

✿ ELEGANT EARTH CONCRETE benches are ideal in combination with our tables, or by themselves in a private garden resting spot. To bring these stoic pieces indoors, soften the look and feel by adding plush cushions or decorative elements.



VICTORIAN GARDEN STOOL
FN009
15"L x 11"W x 17"H
Shown in Moss



FLEUR DES LYON BENCH
FN444
48"L x 16"W x 19"H
Shown in Moss



MADISON BENCH
FN026
48"L x 16"W x 19"H
Shown in Moss



MAKE OUT BENCH
FN250
36"L x 15.5"W x 25"H
Shown in Rottenstone



60" STONE BENCH
FN860
60"L x 16"W x 18"H
Shown in French Wax
Also available in 48"L version (FN848)



CLASSIC BENCH
FN861
61"L x 19"W x 20"H
Shown in French Wax



FINIAL BASE BENCH
FN024
60"L x 16"W x 20"H
Shown in French Wax



SWEETHEART BENCH
FN047
63"L x 19"W x 19"H
Shown in French Grey

Shown: Rough Hewn Bench (FN841) in French Wax



ROUGH HEWN BENCH
FN841
40.5" L x 19" H x 12" DEEP
Shown in French Wax



MOD CHAIR
FN119
20" W x 17" D x 31" H
Shown in Blanc



MCALPINE BENCH
MH955
43" L x 13" W x 15" H
Shown in Blanc



OLD ENGLISH FARM BENCH
WF305
126" L x 20" W x 19.25" H
Shown with French Wax bases
Shown with stained and spar urethane sealed cedar top with square edges
Also available in 84" version (WF300)
Custom sizes available



EDGEWOOD BENCH
FN650
60" L x 17" W x 19" H
Shown in Blanc



EDGEWOOD FARM BENCH
WF650
96" L x 20" W x 19.25" H
Shown with Blanc bases
Shown with sealed cedar top with cove edge detail
Also available in 144" version (WF655)
Custom sizes available

*Shown Clockwise from top: French Teak
Bistro Chair (FN112), French Teak Side Chair
(FN100), French Teak Arm Chair (FN105) and
Belgian Bistro Chair (FN170)*



*Made from Sustainably
Sourced Teak*

TAKE A SEAT

OUR SUSTAINABLY SOURCED teak is a perfect partner for our entire line of dining and occasional tables. Generously sized and sturdy, it offers the quality and longevity you seek for your investment. The all teak styles feature mortise and tenon joinery and stainless hardware. The slatted seating features powder coated heavy-gauge iron in fixed and folding varieties.



FRENCH TEAK SIDE CHAIR
FN100
39" H X 19.5" W X 20" DEEP



FRENCH TEAK ARM CHAIR
FN105
39" H X 22" W X 20" DEEP



COLONIAL ARM CHAIR
FN155
36" H x 24" W x 23" DEEP



FRENCH TEAK BISTRO CHAIR
FN112
34" H x 19" W x 20" DEEP



FOLDING BISTRO ARM CHAIR
FN135
33" H x 21" W x 22" DEEP



FOLDING BISTRO SIDE CHAIR
FN130
34" H x 20" W x 20" DEEP



COLONIAL SIDE CHAIR
FN150
36" H x 19" W x 21" DEEP



FRENCH TEAK LOVE SEAT
FN115
39" H x 40" W x 22" DEEP



BELGIUM BISTRO CHAIR
FN170
34" H x 17.5" W x 18" DEEP



*Shown: French Baluster Lamp (LT363)
42" Demi Lune Console Table (FN301), Great Planter (PL847)
and Faux Bois Bowl (PL399)*



*With 42" x 21" Top
FN 301*



*With 48" x 24" Top
FN 300*



*DEMI LUNE CONSOLE TABLE
Both Versions 30"H
48" Version shown in Moss*

PERFECT COMPLEMENTS

USED ALONE OR as a complement to our line of outdoor concrete dining furniture, Elegant Earth Demi Lune console tables are solidly graceful. Although cast in weather-durable concrete, these pieces are stylish and functional enough to be used indoors, and many people do. We have sizes to fit almost any space in and around the home, even the most difficult ones. Use our servers – with or without firewood storage – to dazzle guests at your next dinner party.



48" PERFECT DEMI LUNE
FN948
48"L x 24"W x 30"H
Shown in French Wax



32" PERFECT DEMI LUNE TABLE
FN932
32"L x 16"W x 28"H
Shown in French Wax



Shown: 32" Perfect Demi Lune Table (FN932) in French Wax

SHOW STOPPER

FROM THE MOMENT it was introduced this piece has been a sensation! Our signature console table is perfect for narrow spaces and it's scalability allows it to command larger spaces too.

Single Console with 72" x 10" TOP
FN 372

Double Console with 72" x 10" TOP
FN 373

Single Console with 54" x 10" TOP
FN 354

Double Console with 54" x 10" TOP
FN 355



CONSOLE TABLE
Both Versions 33"H
54" Version shown in French Wax
Professional Installation Recommended

DOUBLE CONSOLE TABLE
Both Versions 35"H
54" Version shown in Moss
Requires Professional Installation



FIREWOOD CONSOLE TABLE
Both Versions 35"H
72" Version shown in French Wax
Ships in 8 pieces
Requires Professional Installation

Shown: Three 72" Firewood
Console Tables (FN313)
in a custom grouping





Shown: Rough Hewn Firewood Console
FN844 in French Wax



ROUGH HEWN DOUBLE CONSOLE
FN843
81"L x 12"D x 34"H
Shown in French Wax



ROUGH HEWN CONSOLE
FN842
40.5"L x 12"D x 34"H
Shown in French Wax



ROUGH HEWN FIREWOOD CONSOLE
FN844
40.5"L x 24"D x 34"H
Shown in French Wax
Ships in 6 pieces



84" OLD ENGLISH SERVER
FN089
84"L x 24"W x 30"H
Shown in Moss



LARGE BALUSTER SERVER
WF425
60"L x 24"W x 30 1/4"H
*Shown with French Wax Bases and Stained
Antique Pine Top
Custom Sizes Available*



82" PERFECT SERVER
FN389
82"L x 24"W x 33"H
Shown in French Wax



PERFECT SERVER WITH CEDAR TOP
WF725
96"L x 24"W x 34"H
*Shown with French Wax Bases and Sealed
Cedar Top
Custom Sizes Available*



60" CANTERA CONSOLE TABLE
FN160
60"L x 16"W x 34"H
Shown in French Wax




48" CANTERA CONSOLE TABLE
FN148
48"L x 16"W x 34"H
Shown in Moss

CANTERA CONSOLES

✿ NAMED AFTER THE SPANISH WORD for quarry, the floral motif on the bases lend a rustic sense of tradition to complement the sturdy functionality of the generously sized tops (available in both concrete and wood).



CANTERA SERVER
WF100
60"L x 24"W x 31 1/4"H
*Shown with French Wax Bases and Medium
Stain Antique Heart Pine Top*



Shown: 60" Cantera Console Table (FN160) in French Wax. Shown with French Water Jug (PL143) and Petite Oil Jug (OJ228) both in Provence Crème.

Shown: Modern Console (FN660) in Blanc





60" MODERN CONSOLE
FN660
60"L x 14"W x 35"H
Shown in Blanc



60" MODERN DOUBLE CONSOLE
FN662
60"L x 14"W x 38.5"H
Shown in Blanc



MODERN BENCH
FN661
60"L x 14"W x 18.5"H
Shown in Blanc

A RIGHT ANGLE

WITH RECTILINEAR LINES and bases turned on the bias, this collection shows how simplicity has a powerful effect on the eye. The hard angles becom the light to amplify its brightness by casting the perfect shadow.

*Shown: St. Remy Square Coffee Table
(FN143) in French Wax with 3 cute
Craftsman Bowls in Blanc (page 73)*



FOR SPECIAL MOMENTS

THE PERFECT SIZED TABLE and a perfect conversation can often go hand-in-hand. Elegant Earth Occasional and Coffee Tables offer limitless possibilities indoors and out. Make the setting grand or intimate - you can't go wrong with these interesting and functional styles.



With 42" x 42" Top
FN 143



With 42" Dia. Top
FN142



With 48" Dia. Top
FN 144



ST. REMY SQUARE COFFEE TABLE
FN143
42"L x 42"W x 17"H
Shown in French Wax



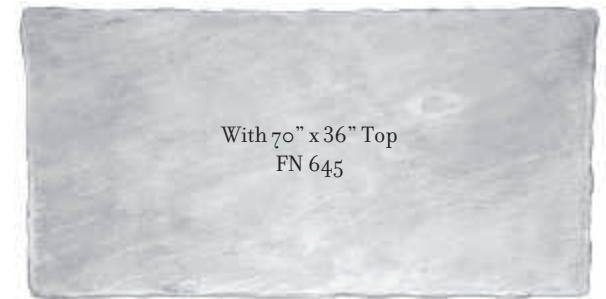
ST. REMY ROUND COFFEE TABLE
Both Versions 17"H
42" Version shown in Rottenstone



Shown: 70" Large Old English Coffee Table (FN645) in French Wax with Woodlawn Bowl (PL297) in Moss



With 60" x 36" Top
FN 644



With 70" x 36" Top
FN 645



LARGE OLD ENGLISH COFFEE TABLE
Both Versions 21.5" H
70" Version shown in French Grey



SQUARE OLD ENGLISH COFFEE TABLE
Both Versions 22"H
42" Version shown in French Wax



With 42" x 42" Top
FN 642



With 36" x 36" Top
FN 636



ROUND OLD ENGLISH COFFEE TABLE
All Versions 22"H
42" Version shown in French Wax



With 36" Dia. Top
FN 536



With 42" Dia. Top
FN 542



With 48" Dia. Top
FN 548

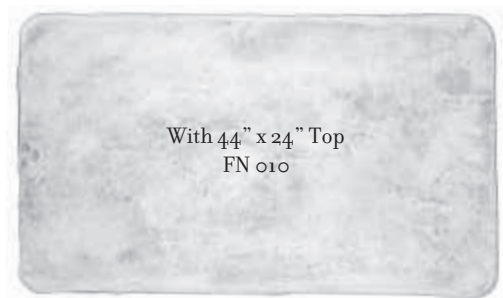
Shown below: Stone Coffee Table (FN010) in French Wax

AN ARCHITECTURAL HERITAGE

✿ WE REPURPOSED the base of an antique architectural finial to create the legs for this group of stunning tables. Used alone for a side table or in a grouping for a large coffee table — its understated grace provides a distinctive look both inside and outside the home.



FINIAL BASE SIDE TABLE
FN224
24" L x 24" W x 20" H
Shown in French Wax



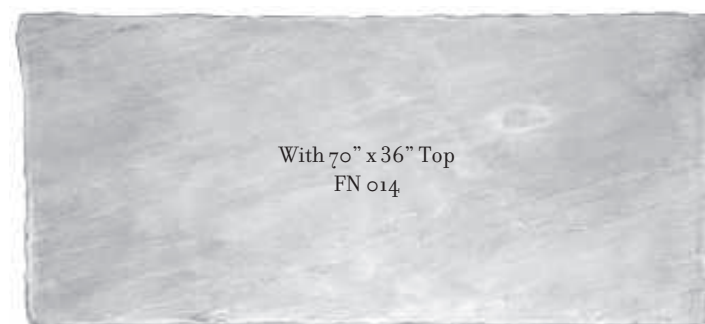
With 44" x 24" Top
FN 010



With 60" x 36" Top
FN 013



STONE COFFEE TABLE
FN 010
44" L x 24" W x 20" H
Shown in Rottenstone



With 70" x 36" Top
FN 014



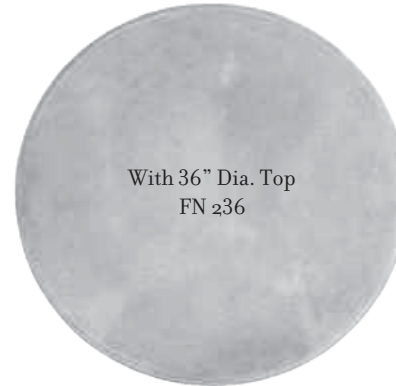
FINIAL BASE COFFEE TABLE
70" L x 36" W x 20" H
Shown in French Wax
Also Available with 60" Top (FN 006)



DOUBLE FINIAL BASE COFFEE TABLE
Both Versions 23" H
70" Version shown in French Wax



With 32" Dia. Top
FN 232



With 36" Dia. Top
FN 236



With 31" x 23" Oval Top
FN 231



PERFECT COFFEE TABLE
All Versions 23"H
32" Round Version shown in French Wax



With 22" x 17" Oval Top
FN 502



With 24" Dia. Round Top
FN 503

SMALL STATEMENTS

✿ OUR SMALLEST TABLES pack a serious punch. The entire offering of sizes and styles are suitable for use inside or out, and provide a functional finishing touch to any space.



PETITE SIDE TABLE
BOTH VERSIONS 23" H
Oval Version shown in French Wax



ESTATE COCKTAIL TABLE
FN 218
18" DIA x 25" H
Shown in Moss



ROUND MILLSTONE SIDE TABLE
FN124
24" Dia x 22.5" H
Shown in Rottenstone
Also available with 24" square top



MILLSTONE TABLE
FN015
19" Dia x 23" H
Shown in French Grey

*Shown: Modern Column Triad
(PD615, PD619, and PD623)
in Blanc*





MODERN COLUMN TRIAD
 PD615
 8"L x 8"W x 15"H
 PD619
 8"L x 8"W x 19"H
 PD623
 8"L x 8"W x 23"H
All shown in Blanc



LARGE MODERN COLUMN TRIAD
 PD715
 12"L x 12"W x 15"H
 PD719
 12"L x 12"W x 19"H
 PD723
 12"L x 12"W x 23"H
All shown in Gris



FLUTED COLUMN TRIAD
 PD315
 9"Dia x 15"H
 PD319
 9"Dia x 19"H
 PD323
 9"Dia x 23"H
All shown in French Wax



EDGEWOOD COFFEE TABLE
 FN652
 28"L x 28" W x 18.5" H
Shown in Blanc



EDGEWOOD COFFEE TABLE
 FN020
 14" x 14" x 16"H
Shown in Plaster White finish



MEDITERRANEAN CAPITAL
 PD335
 15" L x 15" W x 22"H
Shown in French Wax



MANHATTAN CAPITAL
 PD400
 21" L x 21" W x 17"H
Shown in Rottenstone



Shown: 90" Marfa Dining Table (GA750) and 90" Marfa Bench (GA751) in Weathered Zinc with Blanc tops and three cute Craftsman Bowls (PL152) in Blanc

CREATIVE OASIS

✿ NAMED FOR A HIP arts community in West Texas known for it's sparse modern sensibilities, our Marfa Table and Bench are sure to inspire with their minimalism. Frames are available in standard and custom metal finishes and pair with concrete tops in our modern finishes - see page 4.



90" MARFA DINING TABLE
GA750
90" L x 42" W x 30"H
*Shown with Weathered Zinc frame and Blanc top
custom sizes available*



90" MARFA BENCH
GA751
90" L x 14" W x 20"H
*Shown with Weathered Zinc frame and Blanc top
custom sizes available*

Shown : Oak and Galvanized Iron
Bistro Tables (GA760)

PHOTO BY ANCELMO NAVA



SIMPLE COMBINATION

These heavy duty oak and galvanized iron tables are great for commercial applications indoors and out.

Custom sizes available, please inquire.



OAK AND GALVANIZED
IRON BISTRO TABLE
GA760
34" L x 34" W x 30" H



OAK AND GALVANIZED IRON
DINING TABLE
GA765
60" L x 34" W x 30" H

*Shown: Hammered Iron Demilune Table (HI336) with
Gun Metal frame and Blanc concrete top*

A PLEASANT PAIRING

Combining our concrete tops with welded iron bases in our standard metal finishes, these delightfully functional styles can be used both inside and outside the home.



HAMMERED IRON DEMILUNE TABLE
HI 336
36" L x 18" D x 33" H
*Shown with Flat Black frame and Blanc
concrete top*



HAMMERED IRON SIDE TABLE
HI 318
22" DIA x 19" H
*Shown with Weathered Zinc frame and Blanc
concrete top*



BARCELONA SIDE TABLE
GA 200
24.5" L x 12.5" W x 22" H
*Shown with Weathered Zinc
frame and Blanc concrete top*

BARCELONA COCKTAIL TABLE
GA 100
12.5" L x 12.5" W x 19" H
*Shown with Weathered Zinc
frame and Blanc concrete top*



BARCELONA CONSOLE TABLE
GA 400
48.5" L x 12.5" W x 33" H
*Shown with Weathered Zinc frame and Blanc concrete top
Also available in a 72" Version (GA600)*

A PRETTY PORTMANTEAU

Using the Faux Bois technique of board formed concrete combined with trapezoidal galvanized metal bases, these pieces fuse organic and modern textures and lines with stunning results. Perfect for use indoors or out.



ZOID BOIS SIDE TABLE
GA770
22" L x 22" W x 22" H
Shown with Gris top



ZOID BOIS COFFEE TABLE
GA771
60" L x 34" W x 16" H
Shown with Gris top



ZOID BOIS BISTRO TABLE
GA772
36" L x 36" W x 30" H
Shown with Blanc top



36" ZOID BOIS PUB TABLE
GA773
36" L x 36" W x 41" H
*Shown with Blanc Top
Also available with 22" top (GA774)*



*Shown: Zoid Bois Coffee Table
with Gris top (GA771)*

*Shown below:
Two McAlpine 20" Consoles (MH956) in Gris and a McAlpine
Medium Trefoil Planter (MH911) in Blanco*



ARTIST STATEMENT

INTERNATIONALLY ACCLAIMED ARCHITECT Bobby McAlpine has always loved working with concrete, and we were thrilled to bring these instant classics to life! The ancient and the modern are married in the well edited lines of this collection.



TREFOIL TABLE
MH950
48" DIA X 26"H
Shown in Gris



McALPINE BENCH
MH955
43" L x 13" W x 15" H
Shown in Blanc



McALPINE 20" CONSOLE
MH956
20" L x 25" Deep x 36" H
Shown in Gris



McALPINE 36" CONSOLE
MH957
36" L x 25" Deep x 36" H
Shown in Gris



McALPINE BANQUET TABLE
MH960
138" L x 33" W x 29" H
Shown in Gris
Available in shorter lengths

*Shown: Small Trefoil Planter (MH910) in Blanc
with Selection of Antiques Available at Atlanta
and High Point Markets*





SMALL TREFOIL PLANTER
MH910
16" DIA X 5"H
Shown in Blanc



MEDIUM TREFOIL PLANTER
MH911
24" DIA X 7.5"H
Shown in Gris



LARGE TREFOIL PLANTER
MH912
48" DIA X 15.5"H
Shown in Gris



Shown below:
Large Olive Jar (OJ220)
Tiny Olive Jar (OJ218)
Both in French Wax

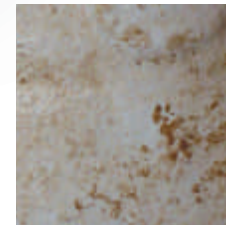
In addition to Standard Finishes, Olive Jars are also available in these Special Finishes:



Antique Crème



Provence Green



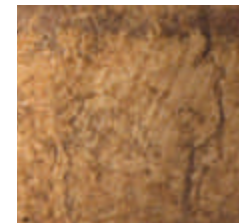
Hydrangea Blue



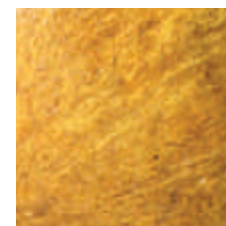
Terra Cotta



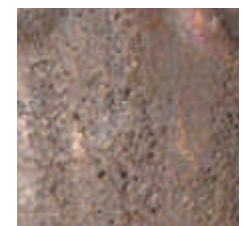
Rouge



Vintage Brown



Amber



Cobalt

THE FEEL OF PROVENÇE

✿ THESE CONTAINERS ARE Provençal classics and remain one of our most popular products. They offer generous planting volume, accommodating wide mouths, and a dash of color. Cast in a frost-proof concrete, these versatile beauties help make any landscape rich year round. Olive Jars come in four sizes, and are available in our standard finishes, as well as in the authentic historical colors of our Special Finishes.



MINI OLIVE JAR
OJ225
4"Dia x 5"H
*Shown in Provence Green,
Antique Crème, and Terra Cotta*



TINY OLIVE JAR
OJ218
11"Dia x 13"H
Shown in Antique Crème



SMALL OLIVE JAR
OJ219
16"Dia x 20"H
Shown in Terra Cotta



LARGE OLIVE JAR
OJ220
20"Dia x 25"H
Shown in Provence Green



EXTRA LARGE OLIVE JAR
OJ 239
26"Dia x 32"H
Shown in French Wax

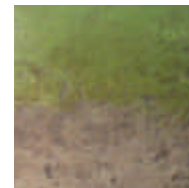
*Shown below: Aubergine Oil Jar (OJ226) and
Tiny Oil Jar (OJ227), both in Provence Crème*



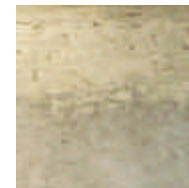
Instead of our Standard Finishes, Oil Jars are available in these Special Finishes:



Mustard



Provence Green



Provence Crème



EXTRA LARGE OIL JAR
OJ238
29" Dia x 37" H
Shown in Provence Crème



LARGE OIL JAR
OJ221
22" Dia x 28" H
Shown in Mustard

SIMPLE AND HISTORICAL

✿ OUR OIL JARS designs are extremely popular, and rightly so. Unlike the costly and hard to find original antiques, our accurate reproductions are cast in a frost proof concrete suitable for year-round use. Although great for planting, they evoke an ancient function that allows them to stand alone without any planting at all. Available in many sizes and a unique color offering, our Oil Jars are at home both indoors and out. Offered in our historical Special Finishes only, these pieces speak for themselves.



SMALL OIL JAR
OJ222
18"Dia x 22"H
Shown in Provence Crème



AUBERGINE OIL JAR
OJ226
19"Dia x 22"H
Shown in Provence Crème



PETITE OIL JAR
OJ228
14"Dia x 18"H
Shown in Provence Crème



TINY OIL JAR
OJ227
12"Dia x 12.5"H
Shown in Provence Green



FRENCH WATER JUG
PL143
12"Dia x 14"H
Shown in Provence Green



MINI OIL JAR
OJ230
5.75"Dia x 6.5"H
Shown in Provence Crème and Mustard

Shown: 2 Small Biot Jars (OJ234) in Moss



BIOT JAR
OJ223
17" Dia x 29"H
Shown in Moss



LARGE BIOT JAR
OJ231
23" Dia x 37.5"H
Shown in Moss

JUST THE RIGHT SHAPE

✿ NAMED AFTER A CENTURIES OLD POTTERY commune in the South of France, our Biot Jars offer both European style and functionality. They work great in pairs or triads, and garden designers take note - these narrow and tall jars work wonders in tight spots that need plenty of planting room like climbing plants and topiaries. Furthermore, the unique proportions allow them to transcend architectural boundaries offering the perfect look in both old world and modern settings. Available in standard Finishes only.



Mini Biot Jar
OJ237
5" Dia x 8"H
Shown in French Wax



Petite Biot Jar
OJ235
12.5" Dia x 24"H
Shown in French Wax



Small Biot Jar
OJ234
14" Dia x 26" H
Shown in French Wax



Tiny Biot Jar
OJ236
7" Dia x 12"H
Shown in French Wax



*Shown: Margeaux Jardinière (OJ232)
in French Wax*



*QUEEN ST. JARDINIÈRE
PL850
16" Dia x 14.5"H
Shown in Moss*



*MARGEAUX JARDINIÈRE
OJ232
21" Dia x 20"H
Shown in French Wax*

EUROPEAN CHARM

✿ A PERFECT COMPLEMENT to our Olive, Oil, and Biot Jars, this selection of containers is wonderfully versatile. Display and plant in confidence knowing these containers will never go out of style, and will always delight the eye. Available in standard finishes only.



PROVENCE FINIAL POT
PL048
8.5" Dia x 10"H
Shown in French Grey



SPANISH POT
PL140
19" Dia x 13"H
Shown in Moss



Spanish Oil Jar
OJ245
17" Dia x 26"H
Shown in French Wax



PROVENCE URN
PL258
18" Dia x 24"H
Shown in Moss



ANDUZE JAR
OJ224
17" Dia x 18"H
Shown in Moss



Shown: English Village Urn (PL485) in French Wax

OF A CERTAIN PLACE AND TIME

INSPIRED BY ITEMS culled from mansions and bungalows in the heart of the deep South, the Birmingham Collection features clean lines and classic proportions suitable for all types of architecture. The pieces present themselves well on a plinth or scale-appropriate pedestal. See pages 100-103 for the entire pedestal offering.



ENGLISH VILLAGE URN
PL485
33" Dia x 17"H (18.25"Sq Base)
Shown in Rottenstone
Shown on LARGE ESTATE PLINTH (PD486) see page 103



LARGE ENGLISH VILLAGE URN
PL487
40" Dia x 21"H (22"Sq Base)
Shown in French Grey

Shown: Thornhurst Urn (PL475) in Moss



THORNHURST URN
PL475
29" Dia x 14" H (18.5" Sq Base)
Shown in French Wax



VINTAGE URN
PL158
28" Dia x 18" H (14" Dia Base)
Shown in Moss



REDMONT URN
PL451
24" Dia x 14" H (10" Sq Base)
Shown in Rottenstone
Shown with CRESTLINE PLINTH (See page 103)



VERANDA URN
PL840
25" Dia x 17" H (18" Sq Base)
Shown in Rottenstone
Includes VERANDA PLINTH (PD200)

Shown: Redmont Urn (PL451) in Rottenstone





Shown: Vintage Pot (PL141) in French Wax



VINTAGE POT
PL141
20" Dia x 13"H (10" Dia Base)
Shown in French Grey



LAKESHORE URN
PL100
17.5" Dia x 12.5"H (10" Sq Base)
Shown in Moss
Shown with CRESTLINE PLINTH



DERBY URN
PL480
16" Dia x 12"H (10"Sq Base)
Shown in Moss



BIGSBY URN
PL210
17" Dia x 12"H (10.5"Sq Base)
Shown in Moss



SMALL CRESTLINE URN
PL199
14.25" Dia x 11" H (8"Sq Base)
Shown in French Wax



AVONDALE URN
PL033
17" Dia x 21"H (11.5" Sq Base)
Shown in Rottenstone



PERFECT OVAL URN
PL360
23"L x 19"W x 21"H
Shown in French Wax



CRESTLINE URN
PL200
18" Dia x 15"H (10"Sq Base)
Shown in French Wax
Shown with CRESTLINE PLINTH

Shown: Woodlawn Bowl (PL297) in French Wax



REDMONT BOWL
PL452
24" Dia x 9.5"H
Shown in French Wax



WOODLAWN BOWL
PL297
17.5" Dia x 6"H
Shown in Moss

SIMPLE SHOWCASE

❁ WHY DOES SUCH A COMMON SHAPE hold such allure? Elegant Earth's concrete bowls, rendered in freeze-proof concrete are at once both casual and sophisticated; ancient yet modern. Alone on a table or in groups on a terrace, they will quickly become an indispensable part of your design repertoire.



CUTE CRAFTSMAN BOWL
PL152
10.25" Dia x 5"H
Shown in Rottenstone



FLUTED OVAL BOWL
PL466
15" L x 12" W x 6"H
Shown in French Grey



DERBY BOWL
PL481
16.5" Dia x 7.5"H
Shown in Rottenstone



BIRMINGHAM BOWL
PL495
20" Dia x 9"H
Shown in French Wax



MODERN STAR BOWL
PL262
19" Dia x 4"H
Shown in Rottenstone

Shown: Birmingham Bowl (PL495) in Plaster White





LARGE DISH
PL845
32" Dia x 9"H
Shown in Moss



THORNHURST BOWL
PL476
29" Dia x 8"H
Shown in French Wax



ENGLISH VILLAGE BOWL
PL486
33" Dia x 10"H
Shown in Moss



LARGE ENGLISH VILLAGE BOWL
PL488
40" Dia x 12.25"H
Shown in French Grey



ARCHITECTURAL DISH
PL810
54" Dia x 12.5"H
Shown in Moss

Shown below: Large Garland Urn (PLo81) in Moss



REVIVAL URN
PLo45
26" Dia x 26"H (12" Dia Base)
*Shown in Plaster White with
Rottenstone Accent*



SMALL REVIVAL URN
PLo43
17" Dia x 15"H (8" Dia Base)
*Shown in Plaster White with
Rottenstone Accent*



DEVONSHIRE URN
PL175
26" Dia x 20"H (12" Sq Base)
Shown in Moss



BOCA GRANDE URN
PL400
25" Dia x 20.5"H (11.5" Sq Base)
Shown in Moss

HISTORICAL FAVORITES

✿ THESE TIMELESS DESIGNS are a staple of garden design and never go out of style. Elegant Earth urns feature footed bases and are available in a range of styles and sizes to fit any application. The addition of scale-appropriate pedestals & plinths complete the picture for an even grander look. See pages 100-103 for the entire pedestal and plinth offering.



FAIRFIELD URN
PL440
22" Dia x 23"H (11" Dia Base)
Shown in Moss



WELLINGTON URN
PL460
22" Dia x 14" H (8.5" Sq Base)
Shown in Rottenstone



CLASSICAL URN WITH HANDLES
PL138
38"L x 22"W x 27"H (11" Sq Base)
Shown in French Wax



FLORAL MEDALLION URN
PL305
20" Dia x 25"H (12" Sq Base)
Shown in Moss



LARGE GARLAND URN
PL081
32" Dia x 28"H (19" Dia Base)
Shown in Moss



Shown: Regency Urn (PL540) in French Wax



REGENCY URN
PL540
30" Sq x 15.5" H (22" Sq Base)
Shown in French Wax



PRINCETON URN
PL361
23" Dia x 18" H (16" Sq Base)
Shown in French Grey



SUSSEX URN
PL049
15.5"Dia x 17"H (9"Sq Base)
Shown in Rottenstone



CHESHIRE URN
PL230
19"Dia x 15.75"H (10"Sq Base)
Shown in Rottenstone
Shown with CHESHIRE PLINTH
PD230
16"L x 16"W x 6"H (11.5"Sq Top)



LARGE GARLAND JARDINIÈRE
PL074
24"Dia x 20"H
Shown in Rottenstone



TULIP POT
PL490
22"Dia x 16.5"H
Shown in Moss



SHOWN BELOW: LARGE GARLAND JARDINIÈRE (PL074)
in Rottenstone



Shown: Mammoth Pots (PL819) in Moss

BOLD STATEMENTS

✿ OUR LARGEST CONTAINERS are architecturally versatile and a favorite of landscape architects. These pieces have been developed especially for large commercial and residential landscape projects and are ideal as focal points. Cast in concrete, these containers provide ample room for large-scale plantings.



MAMMOTH POT
PL819
37" Dia x 28"H
Shown in Moss



GREAT PLANTER
PL847
26" Dia x 22"H
Shown in Moss



GREAT PLANTER I
PL855
23" Dia x 19"H
Shown in Moss



GREAT PLANTER II
PL848
19" Dia x 16"H
Shown in Moss



GREAT PLANTER III
PL849
16" Dia x 14"H
Shown in Moss



Shown: Shutze Orange Tree Planters (PL247)



SHUTZE ORANGE TREE PLANTER
PL247
36" Dia x 24.5"H
Shown in Moss



SHUTZE LEMON TREE PLANTER
PL246
27.5" Dia x 23.5" H
Shown in Moss



Shown: Lemon Tree Planters (PL246)

*Shown: Large Square
Planters (PL821)
in Lichen*



SMALL SQUARE PLANTER
PL829
17.5" L x 17.5" W x 16" H
Shown in French Wax



LARGE SQUARE PLANTER
PL821
25.5" L x 25.5" W x 24" H
Shown in French Wax



ANSLEY JARDINIÈRE
PL240
39" Dia x 37"H
Shown in Moss



*Shown: Ansley Jardiniere
(PL240)*

Shown: Large Southwood Box Planters (PL735) in Blanc





LARGE SOUTHWOOD BOX PLANTER
PL735
34" L x 34" W x 32.5" H
Shown in Blanc



LARGE SOUTHWOOD BOX TROUGH
PL737
46" L x 24.5" W x 24" H
Shown in Blanc



MEDIUM SOUTHWOOD BOX PLANTER
PL734
24" L x 24" W x 23.5" H
Shown in Blanc



SMALL SOUTHWOOD BOX PLANTER
PL733
18.5" L x 18.5" W x 18.5" H
Shown in Blanc



Shown: Four 30" Modern Box Planters (PL730) in Moss

MODERN LOVE

THE SIMPLE AND CLEAN LINES of our Modern Box Planters provide generous planting space and excellent drainage.



20" MODERN BOX PLANTER
PL700
20" L x 20" W x 20" H
Shown in Blanc



30" MODERN BOX PLANTER
PL730
20" L x 20" W x 30" H
Shown in Blanc



TALL MODERN BOX PLANTER
PL732
36" L x 20" W x 32" H
Shown in Gris
Custom Sizes Available



36" MODERN BOX TROUGH
PL720
36" L x 20" W x 20" H
Shown in Blanc



LARGE TAPERED BOX TROUGH
PL725
36.25" L x 18.25" W x 18.25" H
Shown in Gris



Shown: Custom 14 foot Metal Box Trough (ME799) in Weathered Zinc

HEAVY METAL

Made of heavy duty plate steel, these containers are galvanized with the “hot dip” method and then given our signature weathered zinc finish. These shapes are modern and great for large plantings, they are also extremely durable and will provide decades of outdoor use. Custom sizes and shapes available, please inquire.



20" METAL BOX PLANTER
ME720
20" L x 20" W x 20" H
Shown in Weathered Zinc



30" METAL BOX PLANTER
ME730
20" L x 20" W x 30" H
Shown in Weathered Zinc



CUSTOM METAL BOX TROUGH
please inquire for custom sizes
Shown: 100"L x 26" W x 24"H in Weathered Zinc



36" METAL BOX TROUGH
ME736
36"L x 20" W x 20"H
Shown in Weathered Zinc



METAL TAPERED PLANTER
ME740
16"L x 16" W x 30"H
Shown in Flat White

*Shown: Metal Tapered
Planter (ME740)
16"L x 16" W x 30"H
in Weathered Zinc*





Shown above: Classic Urn (PL144) in Antique White



CLASSIC URN
PL144
17" Dia x 18"H (8"Sq Base)
Available Only in Antique White



LARGE CLASSIC URN
PL145
20" Dia x 21"H (10" SQ. BASE)
Available Only in Antique White

JUST THE RIGHT TOUCH

✿ SMALLER CONTAINERS OFFER extreme versatility in both indoor and outdoor applications, and ours offer distinctive style to boot. Many of these work well on hearths or mantels and make excellent centerpieces. Available in a wide variety of unique designs, they're especially useful for floral designers looking to really set their work apart from the rest.



CORINTHIAN POT
PL018
10.5" L x 10.5" W x 8" H
Shown in Plaster White



FLUTED URN
PL530
17" Dia x 14" H
Shown in French Wax



ROSE URN
PL155
17" Dia x 18" H (9.5" Dia Base)
Shown in Rottenstone



Shown: Modern Star Urn (PL261) in Rottenstone



STONE VASE
PL525
15" Dia x 15"H
Shown in Rottenstone



RIBBED OVAL URN
PL464
13.5" L x 9" W x 10"H
Shown in French Grey



LARGE FLUTED OVAL URN
PL465
15" L x 12" W x 11"H
Shown in French Grey



MODERN STAR URN
PL261
19" Dia x 11.5"H
Shown in Rottenstone



TULIP VASE
PL492
12" Dia x 13"H (7.5" Sq Base)
Shown in Rottenstone



CUTE CRAFTSMAN URN
PL154
10.25" Dia x 10"H (5" Sq Base)
Shown in Rottenstone



MID CENTURY ORCHID POT
PL467
6.5" Dia x 6"H
Shown in Gris (Left) and Blanc (Right)



*Shown: Forest Park Trough (PL215)
in Rottenstone*

A SPECIAL PURPOSE

❁ HISTORICALLY GARDEN TROUGHS originated as repurposed livestock feeding vessels. Now a permanent part of the container gardening vernacular, troughs are particularly useful for long narrow spaces. They can be used in either formal or non-formal settings and offer generous planting spaces for seasonal color and herbs.



FOREST PARK TROUGH
PL215
39"L x 14"W x 11"H
Shown in French Wax



ART NOUVEAU GRAPEVINE TROUGH
PL900
37.5" L x 17.5" W x 15.5" H
Shown in Rottenstone



SELF WATERING TROUGH
PL610
54" L x 12" W x 10" H
Shown in Rottenstone



ROUGH HEWN TROUGH
PL550
38" L x 20" W x 12" H
Shown in French Wax



ANGEL PLANTER
PL318
28" L x 16" W x 18" H
Shown in Moss



HOLMES BEACH TROUGH
PL252
36" L x 13" W x 11" H
Shown in Moss

*Shown: Small Fluted Trough (PL529)
in French Wax*





SMALL FLUTED TROUGH
PL529
26.5" L x 8.5" W x 7" H
Shown in French Wax



SMALL EMBELLISHED TROUGH
PL149
25" L x 9.5" W x 8" H
Shown in Rottenstone



ITALIAN PLANTER
PL156
19" L x 10" W x 8" H
Shown in French Wax



SMALL LION HEAD TROUGH
PLO55
8" L x 8" W x 8" H
Shown in Rottenstone

MEDIUM LION HEAD TROUGH
PLO65
16" L x 8" W x 8" H
Shown in Moss

LARGE LION HEAD TROUGH
PLO54
24" L x 8" W x 8" H
Shown in Rottenstone

*Shown below: Square Pedestal (PD103)
with Devonshire Urn (PL175), both in Moss*



SITTING PRETTY

THE RIGHT PEDESTAL is often the difference between great style and a great mistake. Our pedestals are created with style in mind and are available in a range of sizes. They are a perfect match for our beautiful urns and statuary and can lend just the right scale and formality.

Not everything can be placed on a pedestal - but that doesn't mean it has to be any less important! Plinths have the ability to both ground and set-off an urn or statue, achieving just the right height and look for your setting while providing better drainage. And sometimes pot feet are all you need.



POT FOOT
AC200
2.75" L x 1.75" H
Shown in French Wax



POT WEDGE
AC190
4" L x 6" x 1" H
Shown in Moss



WELLINGTON PEDESTAL
PD460
11.75" Sq x 16" H

WELLINGTON PLINTH
PD461
14" Sq. x 6" H
*Both in Rottenstone
Shown with WELLINGTON URN*



SIMPLE 17" PEDESTAL
PD450
18.5"L x 18.5"W x 17"H (14"Sq Top)
Shown in Moss
Shown with BOCA GRANDE URN



FAIRFIELD PEDESTAL
PD441
14"L x 14"W x 13.5"H (12.5"Sq Top)
Shown in French Grey
Shown with FAIRFIELD URN



LARGE COLUMN
PD095
15"Dia x 28"H
Shown in Moss
Shown with SPANISH POT



SQUARE PEDESTAL
PD103
15"L x 15"W x 21"H
Shown in Moss
Shown with DEVONSHIRE URN



OCTAVIAN PEDESTAL
PD125
21"L x 21"W x 21.5"H (17"Dia Top)
Shown in Rottenstone
Shown with VINTAGE URN



27" DIAMETER PEDESTAL
PD120
27"Dia x 12"H (22"Dia Top)
Shown in Moss
Shown with LARGE GARLAND URN



*Shown: Extra Large Estate Pedestal (PD489)
and Large English Village Urn (PL487) both in French Wax*



SMALL ESTATE PEDESTAL
PD483
15.5" L x 15.5" W x 24" H
(14" Sq Top)
Shown in Moss



PETITE ESTATE PEDESTAL
PD482
13.5" L x 13.5" W x 24" H (12" Sq Top)
Shown in French Grey



LARGE ESTATE PEDESTAL
PD485
22" L x 22" W x 29" H (20" Sq Top)
Shown in Rottenstone
Shown with ENGLISH VILLAGE URN (page 67)



MEDIUM ESTATE PEDESTAL
PD484
15.5" L x 15.5" W x 29" H (14" Sq Top)
Shown in French Wax
Shown with CLASSIC URN WITH HANDLES (page 77)



26" Estate Plinth
PD487
26"L x 26"W x 9.5"H (24" Sq Top)

SHOWN WITH LARGE ENGLISH VILLAGE URN
PL487
40"Dia x 21"H (22" Sq Base)
Both shown In French Grey



LARGE ESTATE PLINTH
PD486
22"L x 22"W x 7.5"H
(20.5" Sq Top)
Shown In French Wax



VERANDA PLINTH
PD840
18"Sq x 5"H (15.75"Sq Top)
Shown in Rottenstone



CRESTLINE PLINTH
PD200
12"L x 12"W x 4"H
Shown in Rottenstone



CHESHIRE PLINTH
PD230
16"L x 16"W x 16"H
(11.5"Sq Top)
Shown in Rottenstone

Shown: Crestline Urn (PL200) on Crestline Plinths (PD200) finished in Rottenstone.



DROPS OF SERENITY

❁ THE GARDEN FOUNTAIN possesses an allure few other pieces can equal. The bubbling sound of cool water makes us feel wonderfully at peace. Elegant Earth fountains are exceptional examples of craftsmanship and versatility, are available in a large number of styles, and come in three basic varieties. Above-ground fountains are modular in nature and very easy to install. In-ground fountains are designed to blend seamlessly with the natural elements of a landscape. Wall-oriented fountains and fountain heads work well in hardscaped areas like courtyards where the fountain presentation will be oriented in one direction.



2-TIER REDMONT BUBBLER
FT194
24" Dia x 50"H
Shown in French Grey
Includes Pump



REDMONT BUBBLER
FT185
24" Dia x 44"H
Shown in French Grey
Includes Pump



SPANISH BUBBLER
FT140
19" Dia x 41"H
Shown in Moss
Includes Pump



BOY WITH OVERFLOWING CUP FOUNTAIN SET
FT035
43"L x 36"W x 44"H
Shown in Moss
Includes Pump



Shown above: Boy with Overflowing Fountain Set (FT035) in Moss

Shown: Gothic Obelisk Fountain (FT700) in French Wax



GOTHIC OBELISK FOUNTAIN
FT700
60" L x 60" W x 75" H
Shown in French Wax
Includes pump



ST. REMY FOUNTAIN
FT420
42" Dia x 57" H (24" x 24" Base)
Shown in French Wax
Includes pump



WELLINGTON FOUNTAIN SET
FT460
42" L x 42" W x 38" H
Shown in Rottenstone
Includes pump

*Shown: Tapered Pillar Fountain (FT755)
in Noir with Flat Black Powder Coated 48" Round Metal Basin Surround*





TAPERED PILLAR FOUNTAIN SET
FT756
36"L x 36"W x 36"H (36" Sq Basin)
Shown In Gris
Includes Pump



MODERN TRAPEZOID TROUGH FOUNTAIN SET
FT757
60"L x 36"W x 26.5"H
Shown In Gris
Includes Pump



EXTRA LARGE ORB BUBBLER
FT758
48"L x 48"W x 27"H
(48" Sq Flat Black Powder Coated
Metal Basin Surround)
Shown In Noir
Includes Pump

*Shown: Aubergine Oil Jar Fountain (FT626)
in Provence Creme - has natural aging that comes with time*



BIRMINGHAM TABLETOP BUBBLER
FT495
20" DIA x 9"H
Shown in French Wax
Includes pump



REDMONT TABLETOP BUBBLER
FT195
24"Dia x 14"H
Shown in French Wax
Includes pump



PROVENCE URN FOUNTAIN
FT658
18" Dia x 24" H
Shown in Moss
Inground Basin and Pump Included
Rocks not Included



LARGE GARLAND JARDINIÈRE FOUNTAIN
FT674
24" Dia x 20" H
Shown in Lichen
Inground Basin and Pump Included
Rocks not Included



LARGE OIL JAR FOUNTAIN
FT621
22" Dia x 28" H
Shown in Provence Crème
Inground Basin and Pump Included
Rocks not Included

Shown: Large Biot Wall Fountain Set (FT405) in French Wax





LION MEDALLION
FT008
30"L x 4"W x 30"H
Shown in Rottenstone

SMALL ROSETTE FOUNTAIN
FT012
34"W x 42"H x 23"D
Shown in French Wax
Also available with Lion Head center (FT009)
Includes Pump
Requires professional installation



LARGE LION HEAD FOUNTAIN SET
FT010
47"W x 53"H x 32"D
Shown in French Wax
Also available with Rosette center (FT011)
Includes Pump (Liner optional)
Requires professional installation



LARGE LION FOUNTAINHEAD
FT 396
12" Diameter x 10"D
Shown in French Wax



BACCHUS
WD387
10.5"W x 11.5"H x 5"D
Shown in Moss



LARGE FLORETTE FOUNTAINHEAD
FT005
10" Dia. x 8"D
Shown in French Wax



WISDOM FOUNTAINHEAD
FT 397
28" L x 19" W x 4"D
Shown In Rottenstone



YOUTH FOUNTAINHEAD
FT 398
28" L x 19" W x 4"D
Shown In Rottenstone



DONATELLA LION MASK
FT 395
19.5" L x 18" W x 7.5"D
Shown In Rottenstone



Shown above: Mediterranean Bird Bath (BB270) in French Grey



SHELL BATH
BB064
20" Dia x 6"H
Shown in Rottenstone



GRIFFIN BIRD BATH
BB069
32" Dia x 39"H
Shown in Moss
Ships in 2 pieces



MADISON BIRD BATH
BB025
27" Dia x 33"H
Shown in Moss
Ships in 2 pieces

FOR NATURE'S OWN

❁ No garden sanctuary is fully complete until an invitation is extended to the creatures of the wild. Our bird baths come in a number of pleasing designs and unusual style and size options, and they all feature easy assembly. We also offer several shallow styles ideal for smaller birds and even butterflies.



PETITE RUSTIC BIRDBATH
BB274
16"Dia x 22.5"H
Shown in Moss



ITALIAN BUTTERFLY BATH
BB022
16"Dia x 16"H
Shown in Moss
Ships in 2 pieces



PALM COURT BIRD BATH
BB045
20.5"Dia x 29"H
Shown in Moss
Ships in 3 pieces



MEDITERRANEAN BIRD BATH
BB270
27"L x 8"W x 27"H
Shown in Rottenstone
Ships in 2 pieces



FRENCH FONT BIRD BATH
BB050
18"Dia x 26"H
Shown in Moss



YORKSHIRE BIRD BATH
BB272
12.5"L x 12"W x 25"H
Shown in Moss

Shown below: French Girl (ST445)



FRENCH GIRL
ST445
12"L x 12"W x 32"H
Shown in French Wax
Available piped for fountain



GIRL WITH OVERFLOWING SHELL
STo3o
12"L x 18"W x 36"H
10"Dia Base
Shown in Rottenstone
Available piped for fountain



BOY WITH OVERFLOWING CUP
STo37
10"L x 15"W x 36"H
Shown in Moss
Available piped for fountain

A PERFECT LIKENESS

✿ THE ACCURATE LIKENESS of humans and animals has always been a mesmerizing design element, but high-quality figural pieces remain difficult to find. Our pieces are an exception, featuring great attention to facial detail. Available in a variety of sizes, these fine pieces can be placed indoors or out, and appropriate pedestals and plinths are available for each. See pages 100-103 for the entire pedestal and plinth offering.



VINEYARD CHERUBS
ST300
25"L x 16"W x 33"H
Shown with BORDEAUX PEDESTAL
PD300
33"L x 17"W x 18"H
Both shown in French Wax



AMORINI
ST435
17"L x 8"W x 27"H
Shown in Rottenstone
Sold in pairs



HERALDIC LION
ST510
10"L x 13"W x 28"H
Shown in Rottenstone



OPAL STATUE
ST001
11"L x 11"W x 39"H
Shown in Rottenstone
Available piped for fountain

Shown from left: Hedgehog (AC251), Rabbit (AC293) and Bunny (AC294) all in Moss finish



STANDING LAMB
ST 600
22"L x 8"W x 16"H
Shown in Rottenstone



ENGLISH FOAL
ST 590
24"L x 15.5"W x 17"H
Shown in French Wax



TURTLE
AC306
17"L x 11"W x 8"H
Shown in Moss



TINY TURTLE
AC032
4"L x 2"W x 2"H
Shown in Moss



LAZY BUNNY
AC309
11"L x 8"W x 5"H
Shown in Rottenstone



RABBIT (WITH GLASS EYES)
AC293
9"L x 3"W x 11"H
Shown in Moss



BUNNY (WITH GLASS EYES)
AC294
4"L x 2"W x 6"H
Shown in Moss



STANDING OWL
AC248
4"L x 6"W x 14"H
Shown in Rottenstone



SOME PIG
AC310
10.5"L x 5.5"W x 6"H
Shown in French Wax



OLD FROG
AC034
11"L x 10"W x 9"H
Shown in Moss



GRASSHOPPER
AC312
11"L x 4"W x 4"H
Shown in Rottenstone



HEDGEHOG (WITH GLASS EYES)
AC251
6.5"L x 4.5"W x 3.25"H
Shown in Moss

*Shown below: 5' Drumcliff High Cross (CRo83)
in Moss*



INSPIRED BY HEAVEN

✿ THE CROSS IS a simple and enduring symbol of the ancient relationship between God and humanity. No wonder its beauty has been interpreted by countless artisans. Our crosses are replicas of the intricate stone crosses of Europe, cast in concrete, and faithful to the original proportions. Similarly, representations of angels and saints have been an inspiration for the sculptors hand too, and have been thoughtfully placed in gardens for centuries.



PRAYING CHILD
ST003
7"L x 7"W x 15"H
Shown in Rottenstone



MOTHER AND CHILD
ST002
6"L x 6"W x 23"H
Shown in Rottenstone



ST. FRANCIS OF ASSISI
ST436
5"Dia x 22"H
Shown in Moss



KNEELING ANGEL
ST319
9"L x 15"W x 27"H
Shown in Rottenstone



ST. FIACRE
ST446
8"L x 8"W x 32"H
Shown in Moss



SCOTTISH STANDING CROSS
CRo31
14"L x 11"W x 36"H
Shown in Moss



LEEDS CROSS SECTION
CRo69
13.5"L x 9.5"W x 45"H
Shown in Moss



4' DRUMCLIFF HIGH CROSS
CRo82
16"L x 9.5"W x 48"H
Shown in Moss



SPANISH CROSS
CR428
25"W x 10"D x 51"H
10" Square Base
Shown in French Wax



5' DRUMCLIFF HIGH CROSS
CRo83
16"L x 12"W x 60"H
Shown in Moss
Ships in 2 Pieces

DRAMA FOR THE CANVAS

WALLS ARE SIMPLY canvases waiting to be adorned with drama, which happens to come in all shapes and sizes. Our wall décor is light enough to hang, but heavy enough to resist the winds.



CARYATID
WD385
7"W x 32"H x 6"D
Shown in French Grey



ANGEL
WD290
9"W x 14"H x 5.5"D
Shown in Rottenstone



DOVE PLAQUE
WD038
9.5"L x 6.5"H x 1"D
Shown in Plaster White



LAMB OF VICTORY
WD209
17"L x 20"H x 4"D
Shown in Rottenstone



DECATUR ROSETTE
WD151
10.5"Dia x 3.5"D
Shown in Rottenstone



AMERICAN EAGLE
WD035
16"W x 12"H x 3"D
Shown in French Wax

- (a) SCOTTISH CROSS
CR066
5"L x 1"W x 7.5"H
Shown in French Wax
- (b) SQUARE IRISH CROSS
CR429
9"L x 1.5"W x 18"H
Shown in Rottenstone
- (c) CRUSADER CROSS
CR057
8"L x 1.5"W x 12"H
Shown in French Wax



- (d) COPTIC CROSS
CR400
4.5"L x 3"W x 1"D
Shown in Rottenstone
- (e) GEORGIAN CROSS
CR277
13"L x 11"W x 1"D
Shown in Rottenstone
- (f) LAMB CROSS
CR023
3.5"L x 1.5"W x .5"D
Shown in Rottenstone



ANCIENT NOVELTIES

✿ OUR UNIQUE ACCESSORIES make interesting conversation pieces, as well as timeless decor.



GOthic FINIAL
FI450
10" Dia x 17"H
Shown in French Wax



WINGED VICTORY
AC415
9" L x 10" W x 18"H
Shown in Plaster White



FOOT OF HERMES
AC250
14" L x 6" W x 7" H
Shown in French Wax



LOVE CHILD
BU254
6.5" L x 8" W x 11.5" H
Shown in Plaster White



LARGE STONE BOOK
AC240
15" L x 14" W x 3" H
Shown in French Wax



BUST OF HERAKLES
BU255
13.5" L x 11" W x 18" H
Shown in Rottenstone

Shown below: Large Garland Finial (FI077) in Moss

THE FINISHING TOUCH

🌿 FINIAL MEANS "FINAL". The presence of one or more of these elegant items signals great attention has been given to a space. Our solidly built finials are poured in cast concrete and work wonderfully as the finishing touch for any entrance or pillar, and they simply steal the show as indoor accent pieces.



ARTICHOKE FINIAL
FI006
8"Dia x 12"H
Shown in Moss



SMALL GARLAND FINIAL
FI076
6.5"Dia x 20"H
Shown in Rottenstone



LARGE GARLAND FINIAL
FI077
13"Dia x 31"H
Shown in Rottenstone



PETITE FRUIT COMPOTE
FI064
6.5" Sq Base
11"W x 12"H
Shown in Rottenstone



SMALL FRUIT COMPOTE
FI066
12"Dia x 14"H
Shown in Moss



LARGE FRUIT COMPOTE
FI072
15"Dia x 15"H
Shown in Moss



SMALL FRUIT BASKET
FI445
11"Dia x 19"H
Shown in French Wax



LARGE FRUIT BASKET
FI442
15"Dia x 22"H
Shown in French Wax

GLOBAL VIEW

THE SPHERE is a captivating shape that grabs a viewer's attention and inspires contemplation. We cast ours with and without ground stakes and can also pipe them to be a water feature - thus making it easy to find a way to integrate them with your surroundings.



17" ORB
FI433
17" Dia x 17"H
Shown in Rottenstone
Also available piped for fountain
Please Inquire



Orbs also available with ground stake
PLEASE SPECIFY WHEN ORDERING



15" ORB
FI434
15" Dia x 15"H
Shown in Rottenstone



12" ORB
FI437
12" Dia x 12"H
Shown in Rottenstone



9" ORB
FI438
9" Dia x 9"H
Shown in Rottenstone



Shown: 9" Orbs with ground stake (FI438) in French Wax

Shown below: Tree Bark Pot (PL153) in Rottenstone and Faux Bois Bowl (PL399) in Moss with three Mini Mushrooms (AC303) and Mushroom Waterer (AC307) in Rottenstone arranged atop 42" Demi Lune Table (FN301) in French Wax



PATTERNED FROM NATURE ITSELF

🌿 IN THE GARDEN, we seek tranquility. Blessed with peace and natural solitude, it is a place that remains purely of the earth. What better complement than Faux Bois accents? The age-old technique that mimics the look of wood is played out to perfection in our array of cast concrete designs. We throw in some mushrooms for good measure.



MINI MUSHROOM
AC303
2.5"Dia x 3.5"H
Shown in Rottenstone
Cast with 4" Ground Stake



MUSHROOM WATERER
AC307
8"Dia x 8"H
Shown in Rottenstone
Cast with 6" Ground Stake



FAUX BOIS BOWL
PL399
12"Dia x 7"H
Shown in Moss



FAUX BOIS CACHEPOT
PL350
10"Dia x 8"H
Shown in Moss



TREE BARK POT
PL153
12"L x 9"W x 9"H
Shown in Moss



FAUX BOIS PLANTER-SMALL
PL174
6"Dia x 7"H
Shown in Rottenstone



LARGE GARDEN MUSHROOM
AC201
10"Dia x 26"H
Shown in Moss
Cast with 10" Ground Stake



MEDIUM GARDEN MUSHROOM
AC202
10"Dia x 20"H
Shown in Moss
Cast with 10" Ground Stake



SMALL GARDEN MUSHROOM
AC203
10"Dia x 16"H
Shown in Moss
Cast with 10" Ground Stake



ROUND FAUX BOIS TABLE
FN083
42"Dia x 30.5"H
Shown in Moss
Also available in 48"Dia



FAUX BOIS DEMI LUNE TABLE
FN081
48"L x 24"W x 30.5"H
Shown in Moss
Also available in 42"L x 21"W x 30.5"H



LARGE FAUX BOIS PLANTER
PL173
20"Dia x 25"H
Shown in Moss



SMALL TREE BARK POT
PL163
9"L x 9"W x 6.5"H
Shown in Rottenstone



ROUND FAUX BOIS PLANTER
PL176
13"Dia x 11"H
Shown in Moss



FAUX BOIS BANQUET TABLE
FN085
72"L x 42"W x 30.5"H
Shown in Moss



Limestone Baluster Lamp (LT374) in French Wax with Stonewash Empire Shade

*Shades are available in
the following four fabrics:*



Stonewash



Driftwood



White Burlap



Oatmeal



LIMESTONE BALUSTER LAMP
LT374
16" Dia. x 31"H
Shown in French Wax
DRUM SHADE

ILLUMINATING THE SPIRIT

✿ THERE MAY SIMPLY be no better decorative device than light, especially when that light is elegantly conveyed. Our designs, solidly built adaptations of classic finials, pedestals, and urns, establish both presence and style. With UL-listed electrical parts, lamps are suitable for indoor or covered outdoor use, and are available with a Drum or Empire shade. Lamps may also be purchased without a shade.



PARISIAN PEDESTAL LAMP
LT379
20"Dia x 38"H
Shown in French Wax
EMPIRE SHADE



FRENCH BALUSTER LAMP
LT363
16"W x 30"H
Shown in French Wax
DRUM SHADE



POINCIANA PEDESTAL LAMP
LT372
18"W x 36"H
Shown in French Wax
DRUM SHADE



BALUSTER LAMP
LT349
20"W x 38"H
Shown in Hydrangea Blue
Available in standard and
special finishes on page 58
EMPIRE SHADE



ESTATE PEDESTAL LAMP
LT351
20"W x 36"H
Shown in French Wax
EMPIRE SHADE

*Shown below: Small Fruit Basket Lamp (LT352)
in French Wax with Empire Shade in Stonewash on
(2) Old Stone Books (AC240) See page 123.*



PETITE BALUSTER LAMP
LT376
11"W x 22"H
Shown in French Wax
DRUM SHADE



NEO GOTHIC LAMP
LT394
11"W x 22"H
Shown in Moss
DRUM SHADE



SMALL FRUIT BASKET LAMP
LT352
20"W x 31"H
Shown in French Wax
EMPIRE SHADE



CHERUB WITH ROSE LAMP
LT354
18"W x 34"H
Shown in Ash
DRUM SHADE



CHERUB WITH SHELL LAMP
LT359
18"W x 34"H
Shown in Ash
DRUM SHADE



SMALL GARLAND FINIAL LAMP
LT362
16"W x 33"H
Shown in Rottenstone
DRUM SHADE



FAUX BOIS LAMP
LT378
16"W x 32"H
Shown in Moss
DRUM SHADE

AN EMPHASIS ON STYLE AND GRACE

✿ THIS CLASSICALLY DESIGNED lighting collection, available in its own unique color palette, has become a designer's favorite. Both the lamps and candlesticks can be used indoors or out to create the perfect mood. With UL-listed electrical parts, lamps are suitable for indoor or covered outdoor use. Each lamp is available with or without your choice of Drum or Empire shade. See page 128 for shade fabric choices.

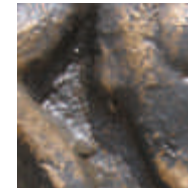
Instead of our Standard Finishes, Candlestick lighting is available in these Special Finishes:



Gold



Antique White



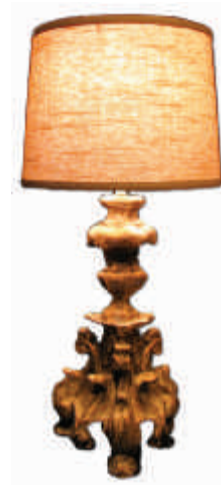
Midnight



28" CANDLESTICK LAMP
LT353
20"W x 38"H
Shown in Gold
EMPIRE SHADE



22" CANDLESTICK LAMP
LT360
16"W x 32"H
Shown in Midnight
DRUM SHADE



15" CANDLESTICK LAMP
LT348
11"W x 24"H
Shown in Gold
DRUM SHADE



8" CATHEDRAL CANDLESTICK
LT208
7" Triangular Base x 8"H
Shown in Midnight



15" CATHEDRAL CANDLESTICK
LT215
7" Triangular Base x 15"H
Shown in Antique White



22" CATHEDRAL CANDLESTICK
LT222
7" Triangular Base x 22"H
Shown in Gold



28" CATHEDRAL CANDLESTICK
LT228
7" Triangular Base x 28"H
Shown in Gold



Shown: Two 28" Cathedral Candlesticks (LT228) in gold

*Shown: French Baluster Candlesticks
Small (LT266) Medium (LT265) and Large (LT264) in French Wax*





BALUSTER CANDLESTICK
LT093
7"Dia x 23"H
Shown in Hydrangea Blue
Available in Standard Finishes
and Special Finishes on page 58



IONIC CANDLESTICK
LT101
56"Sq Base x 19"H
Shown in Moss



SMALL FRENCH BALUSTER
CANDLESTICK
LT266
6"Dia x 8.5"H
Shown in French Wax



MEDIUM FRENCH BALUSTER
CANDLESTICK
LT265
6"Dia x 12"H
Shown in French Wax



LARGE FRENCH BALUSTER
CANDLESTICK
LT264
6"Dia x 17.5"H
Shown in French Wax



STONE BIRD BATH TOP
BB271
27"L x 7"W x 5"H
Shown in Rottenstone



NEO GOTHIC CANDLESTICK
LT094
3.5" x 3.5" x 10"H
Shown in French Wax



POINCIANA CANDLESTICK
LT381
6"Dia Base x 23"H
Shown in French Wax

IT'S ALL IN THE DETAILS

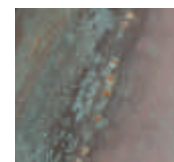
✿ DON'T UNDERESTIMATE THE ability small pieces have to transform your outdoor setting. Elegant Earth lighting accessories are a perfect combination of heavy concrete and delicate detailing. The result? Beautiful candlesticks that don't blow over every time stormy weather hits. Don't limit them to the outdoors, though—indoor dining tables and kitchen counters need an elegant finishing touch too.

*Shown: Small Copper
Cupola Chandelier
(LT400)*



BRIGHT IDEA

✿ WHILE SETTING UP a trade show display, we happened to put a light inside an antique copper cupola - and every customer that came through wanted it! Our reproduction is actually better than the original. Using antiqued architectural grade copper and weathered hardwood, each one is hand-tinkered by our artisans in the U.S.A.



Antiqued Architectural Copper



Antique Oak

Available in Three Sizes:

LARGE COPPER CUPOLA CHANDELIER
LT 402
48" DIA. x 25" H

MEDIUM COPPER CUPOLA CHANDELIER
LT 401
36" DIA. x 20" H

SMALL COPPER CUPOLA CHANDELIER
LT 400
24" DIA. x 15" H



WHERE THERE'S SMOKE

🌿 Mankind has always sought to embrace the element of fire. Our proprietary fire cement allows for both gas and live fires. Please inquire about the possibilities.

Shown : Large English Village Fire Pit (FP487)
40" Dia x 21" H with 4 French Teak Side
Chairs (FN100)

*Image courtesy of: Christopher Show House - Christopher Architecture and Interiors
Photography by Luker Photography*

*Redmont Urn (PL 451) fitted
as a gas burning cauldron
on Crestline Plinth (PD 200)
Both in Gris*

THE STUDIO AT ELEGANT EARTH

OFFERING ANTIQUES, ONE-OF-A-KIND PIECES,
CUSTOM WORK, CONTRACT SERVICES AND RESTORATION

✿ OUR DESIGN STUDIO is the DNA of our unique product line. It also acts as both incubator and proving ground; feeding our creativity, as well as improving our technical acumen and artistry.

Over the years our studio has been about much more than just product development for our factory line - it's been the esoteric nexus between product development, avid antique hunting, inspired custom projects, unique contract work, spirited "one-offs", and limited production offerings.

There is an inherent tension between studio and production work. Often, as a company in our industry grows, there is the temptation to reduce that tension by divorcing itself from large swaths of the creative process; focusing only on what is most profitable, most efficient and most easily managed. In a creative concern, a company following that trajectory can quickly lose it's soul. Expediency is often short-sighted, for in this industry we are reminded time and again, there is no accounting for taste.

Elegant Earth has chosen to embrace the tension between a factory and a custom studio. Furthermore we want to unleash it's creative energy by intentionally inviting our wholesale and trade customers to share in this realm that has informed our style and quality from the beginning. Under the banner of "Studio" - we hope that by formally

offering the following products and services to you, Elegant Earth will continue to stay grounded in what gives our products their relevance: patina, nuance, originality, bespoke craftsmanship, timeless lines, and problem-solving designs. It is in this spirit we hold ourselves out and present:

✿ **ANTIQUES:** We offer our Garden Antique finds available exclusively through our Showroom in Atlanta (Building 2 of AmericasMart) and High Point (Our own building at 301 West English Road in the North Elm District). Be sure to come early to get the best selection as these well-priced pieces are quickly snapped up.

✿ **CUSTOM WORK:** Sometimes you need it customized. We are selective about the projects that we take on, but will consider detailed written requests for custom work and modifications to production pieces.

✿ **CONTRACT WORK:** Our contract work has ranged from 900 candlesticks for Anthropologie to 900 pound planters for a mall in Birmingham - our U.S. production facilities can handle a wide variety of contract casting and private label work. We welcome serious inquiries.

✿ **RESTORATION:** Our knowledge base and expertise in handling concrete and stone has given us many opportunities to restore broken and damaged antiques for select customers, as well as modify antique pieces for enhanced functions.



*Antique Craftsman
Amphora circa 1919*

ANTIQUE FINDS

From our beginnings as a retail store that carried Garden Antiques from all over the world, we have always sought out the best quality antiques and one-of-a-kind pieces. We love merchandising these antiques in our wholesale showrooms, and offer them for sale exclusively in Atlanta and High Point during Market. Priced to provide value to both you and your customer, be sure to get to our showrooms early for the best selection.

*Vignette of Antiques at our
Atlanta Showroom*



*Antique High Back Bench
and selection of Antique vessels
offered at our High Point showroom*






*French Teak Side Chairs (FN 100) with Custom
Concrete and powder coated Iron Bistro Tables*

CUSTOM AND CONTRACT FURNITURE

Elegant Earth's ability to combine materials and our knowledge of manufacturing products for exposure to the elements has made us an attractive partner to designers and architects looking to furnish their commercial or residential site with style. Our ability to speak the "language" of design and collaborate with all the parties involved is essential to the goal of delivering extraordinary work on time and on budget.



*Custom Cedar Bench
with Box Planter supports.*



30" Modern Box Planter (PL 730) specified for a large commercial development

CUSTOM AND CONTRACT CONTAINERS

If your project demands custom containers, or your commercial job needs a modification to a production piece from our line, we are the perfect partner. We love mixing concrete, wood, and metal. We also like to go BIG!



**TALL MODERN BOX PLANTER
(PL 732)**
*in blanc finish with custom
oak trim*



Custom Galvanized Box Planter with oak trim



Architectural Dish (PL810) dyed to match site pavers



Enormous Custom Box Planter in Blanc finish



Colossal 11 foot Wall fountain in Blanc with Galvanized Spouts.

CUSTOM FOUNTAINS

On the occasion that you need a custom fountain or simply some tweaks to a production piece to fit your specific site, The Studio at Elegant Earth is the perfect choice. We love the element of water as much as you do!



Custom Spiller in Travertine Finish for Salt Water Pool



Modified Large Biot Wall Fountain (FT 405) in Rottenstone for retro-fit in an historic construction application

NOTES
